

# Abu Dhabi Early Childhood Authority

 **Promote child development and wellbeing**



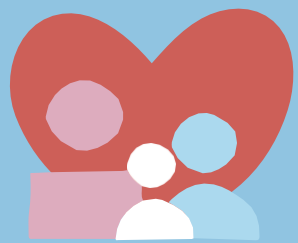
هيئة أبوظبي  
للطفولة المبكرة  
Abu Dhabi Early  
Childhood Authority



- Early childhood is defined as the period from the initial stages of pregnancy to the age of eight.

0-8

Early Childhood Development Covers 4 Aspects:



Socio-emotional



Cognitive



Physical



Linguistic



## Who we are?

We Oversee the Early Childhood Development sector in Abu Dhabi and is committed to the highest standards, placing the young children at the heart of all we do.

## ECA Role

We promote collaboration to help all of Abu Dhabi's young children flourish.

### Enabler

We broaden the capabilities of our partners to support holistic child development.

### Policy Influencer

Inform and influence the development and implementation of ECD policies

### Knowledge Hub

We inform decision-making through research, data and evidence.

### Impact Navigator

Monitor progress of the ECD ecosystem and impact for the community

### Incubator

Nurture the growth and sustainability of innovative ECD programs and services





# Abu Dhabi's Early Childhood Development Strategy 2035

## Vision

Every Young child can flourish to their full potential in a safe and family friendly environment

## Cross Sectorial Focus Areas



Early Care & Education



Family Support



Child Protection



Health & Nutrition

## Objective 1

Ensure that children, parents and caregivers have access to appropriate services and resources to support optimum child development

### Programs

1. Strengthen the child protection system from prevention to rehabilitation
2. Deliver a sufficient and capable ECD workforce
3. Enhance support for parents and primary caregivers
4. Make Abu Dhabi a family friendly Emirate
5. Nurture positive cultural identity and social cohesion

## Objective 2

Create a robust system to enhance accountability and improve quality and sustainability

### Programs

6. Strengthen the ECD research ecosystem and outcomes
7. Ensure high-impact ECD policy & legislation
8. Drive excellence & innovation in ECD
9. Enhance public engagement and partnerships in the ECD ecosystem



# Thirteen strategic priorities have been selected for the ECD sector to focus until end of 2026



## Health and Nutrition

1. Reducing the incidence of overweight/obesity in young children
2. Enhancing early detection and intervention for children of determination
3. Reducing child mortality
4. Securing the mental health of children, parents and caregivers



## Early Care and Education

5. Reducing the socio-economic gap in learning outcomes
6. Increase participation in early learning opportunities
7. Nurturing positive cultural identity and social cohesion



## Family Support

8. Increasing confidence and capabilities of caregivers and supporting quality time spent between parents and children



## Child Protection

9. Increasing confidence in the child protection system
10. Securing the rehabilitation of child victims

11. Enabling private sector participation in the ECD Sector
12. Making Abu Dhabi a family friendly Emirate
13. Mitigating risks and leveraging opportunities for the ECD sector coming from technology

# 🌐 Attributes of every 8-year-old child in Abu Dhabi



## Child Protection

### Secure

- Aware of surroundings and safely participates in community life

### Safe From Harm and Danger

- Protected from sexual abuse
- Free from hazards in their physical environment
- Protected from physical abuse, neglect, violence, and exploitation
- Protected from psychological neglect and abuse



## Early Care & Education

### Sociable

- Aware of social conventions and behaves well with others
- Expresses feelings appropriately

### Academic Competence

- Demonstrates emerging logical thinking and problem solving skills
- Uses and consumes technology appropriately and responsibly  
Performs adequately in math, science, and reading
- Communicates effectively in their native language



## Health & Nutrition

### Adequately nourished

- Eats nutritious foods by following a healthy diet

### Emotionally Secure

- Copes with stress and adversity appropriately
- Treats adults and peers with kindness  
Positive sense of self
- Feels valued and respected by primary caregivers
- Positive and supportive relationships with peers

### Emotionally and Physically Secure

- Adequate fine and gross motor skills and coordination
- Participates regularly in exercise, sports, and active play



## Family Support

### Values Oriented

- Respects different cultures, practices and beliefs  
Strong sense of national pride
- Treats family, friends, and community members with respect
- 

### Stable & Secure Home Environment

- Has a place called “home”
- Parents who can provide an adequate standard of living  
Loving and caring family relationships
- Supportive network of parents and caregivers
- Parents and caregivers who actively nurture their development and well-being



هيئة أبوظبي  
للطفولة المبكرة  
Abu Dhabi Early  
Childhood Authority



# Thank You



abudhabi\_eca



AbuDhabi Early Childhood Authority